



炬邑企業有限公司  
JU YUH ENTERPRISE



**Excellent  
Quality  
Customer  
Satisfaction**

*Automation Equipment R&D and Manufacturing  
Automation component module sales  
Customized product manufacturing  
System integration design and planning*





## 真空試管傳送機 AC1000S

### *Pneumatic Vacutainer Delivery System Model S*

700(W)\*750(D)\*1700(H)mm  
HS code 853710

The input bin capacity can reach 250 pcs

## Features ▶▶

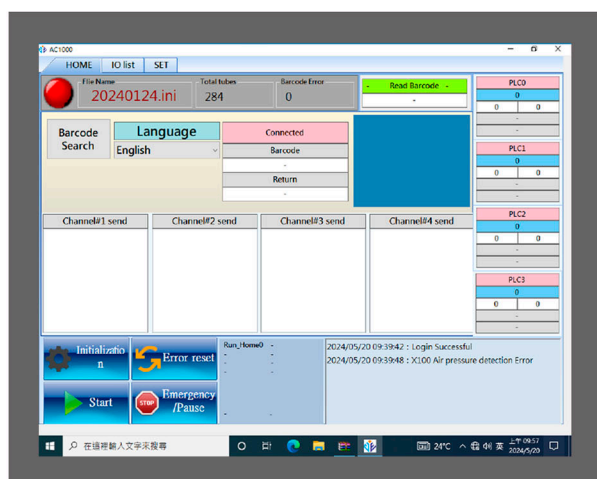
- Random insert specimens and automatically arrange test tubes
- The input bin capacity can reach 250 pcs
- Specimens that can be connected to various external input methods
- Can transport length 70~110mm / width 11-17 mm tubes
- Standard configuration: 3 lines + 1 return box or 4 lines only, it can be adjusted according to customer needs
- All pipelines can be assigned to the same destination or different destinations
- You can define your own pipeline for emergency purpose
- Each pipeline is designed with an independent receiving box to avoid mixing.
- Barcode recording and tracking functions send timeout reminders
- The falling speed can be controlled to effectively avoid hemolysis
- Transmission speed: 600 - 1200 pieces (100 meters, can be adjusted according to parameter settings)
- Negative pressure transmission method, can continuously transport specimens
- It has classification function and can be connected with LIS to send specimens to different destinations through different pipelines.
- Operation interface: 15-inch touch panel
- Pipe length : up to 800 meters
- multicast : 1~4 tubes



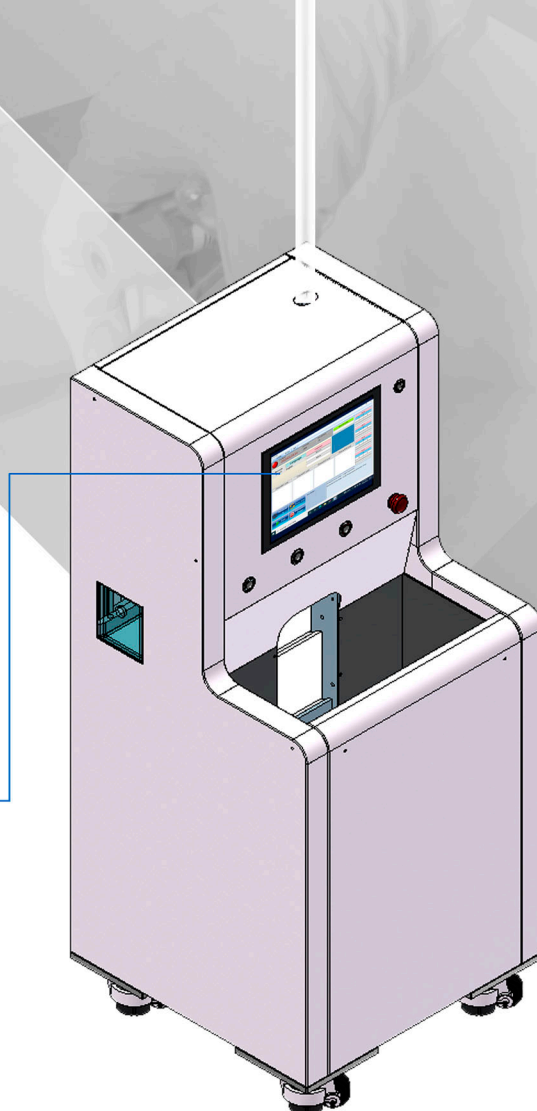
# 真空試管傳送機 AC1000Q

## Pneumatic Vacutainer Delivery System Model Q

490(W)\*490(D)\*1125(H)mm  
HS code 853710



Friendly interface and specimen track clearly



### Easy to use

- Can be connected to the phlebotomy station
- Random access
- One-time investment 200 pcs / bin

### Fast delivery

- Automatically sort and deliver to designated destination
- single transport pipeline

### Patented design

- Patented negative pressure transmission, small size and space saving
- Control the falling speed of the test tube to avoid hemolysis
- Can be flexibly matched with various bulkload and sorting machines

### Tracking and monitoring

- Barcode recording and tracking functions  
Specimens will not be lost or overdue

- Access method: continuous loading • Transmission method: negative pressure pipeline
- Specimen tracking/signing: Yes • LIS connection: Yes
- Transmission speed: 600 - 1200 pieces (100 meters, can be adjusted according to the parameter settings)
- Transfer line size: outer diameter 22 mm / inner diameter 19 mm
- Can transport length 70~110mm / width 11-17 mm tubes
- Pipe length: up to 800 meters • Operating noise level: 60 - 65 dB
- Transmission pipeline: point-to-point transmission • NG specimen return: Yes



自動簽收分類機

**ASR**

*Automatic Sample  
Sorting &  
Registering System*

1400(W)\*1210(D)\*1820(H)mm

HS code 853710

ASR



Can be connected to LIS and specimens can be automatically signed and classified based on barcode information

Combined with vacutainer tubes for classification, 300-400 tubes can be put in at one time

Productivity: up to 1200 pcs/hr

- Sorting box: 1200 pcs

- TLA automatic rack: 200 pcs

It can be set according to customer needs - manual removal or automatic removal (optional).

- CBC automatic circulation rack , by customer provides Rack

Automatically arrange specimens into test tube racks of various CBC/TLA instruments

The test tube resting time before centrifugation can be set independently, with independent timing and reminder, without manual processing.

- TLA slot quantity 200 pcs

- CBC socket quantity 50 pcs

Can be connected to the tube conveying system or the specimen conveying track at the phlebotomy station

Can be connected to biochemistry analyzers or blood cell counters of different brands to automatically load specimens into the machine

The cap color of the test tube can be identified when signing for receipt.

If the wrong test tube is used, it will be returned for inspection in advance.

Working voltage: 220V/30A

Barometer : more than 0.5 Mpa

Test tubes available--Total length: 70~110mm,Pipe diameter: 11~13mm,Cap width: 15~17mm

External link: LIS, Ethernet, RS-232



#### Extra large test tube capacity

- Test tube input capacity: 300 - 400 pcs



#### CBC modular design

- CBC modular design, applicable to CBC Rack of various brands
- Cooperate with CBC machine, according to rack barcode with correct positioning
- When the Rack is full, it will automatically exit and be convenient for users to access.



#### CCD image scanning module

- CCD image scanning module, can scan test tube barcodes and upload to LIS.
- Can distinguish test tube cap color \*optional
- Based on the barcode information, the test tubes are classified into various storage bins (8 bins in total)



#### The test tubes are arranged standing and automatically inserted into racks

- TLA modular design, compatible with specimen insertion trays of various brands.
- Let each test tube stand for independent timing before centrifugation.
- Notification when Rack is full, swap Rack directly, quick and convenient.
- The specimen after standing can be put into Bulkload through the convey or belt. \*Optional



## 微型試管傳送機 AC mini

*Pneumatic  
Vacutainer Delivery  
System - Short  
Distance*

300(W)\*560(D)\*624(H)mm  
HS code 853710



- Main advantages: Suitable for specimen transfer at phlebotomy station.
- After blood drawing, the specimen is automatically transferred to the laboratory.
  - No need to spend time organizing specimens, short-distance transmission saves manpower.
  - Two blood drawing counters share one
  - No need the track under the counter
  - The machine is small and space saving
- Blood samples will be sent immediately to speed up the completion of test reports.
- No need to raise the track, does not affect the design of the phlebotomy station.
- No need to raise the track, does not affect the design of the phlebotomy station.
- Different laboratories on the same floor, transporting specimens over short distances (maximum 30 meters)



## Test tube receiving box W200-AC

Floor type

310(W)mm x 312(D)mm x 1465(H)mm  
HS code 853710



Special pressure relief design

## Test tube receiving box W200-AC

Combined type

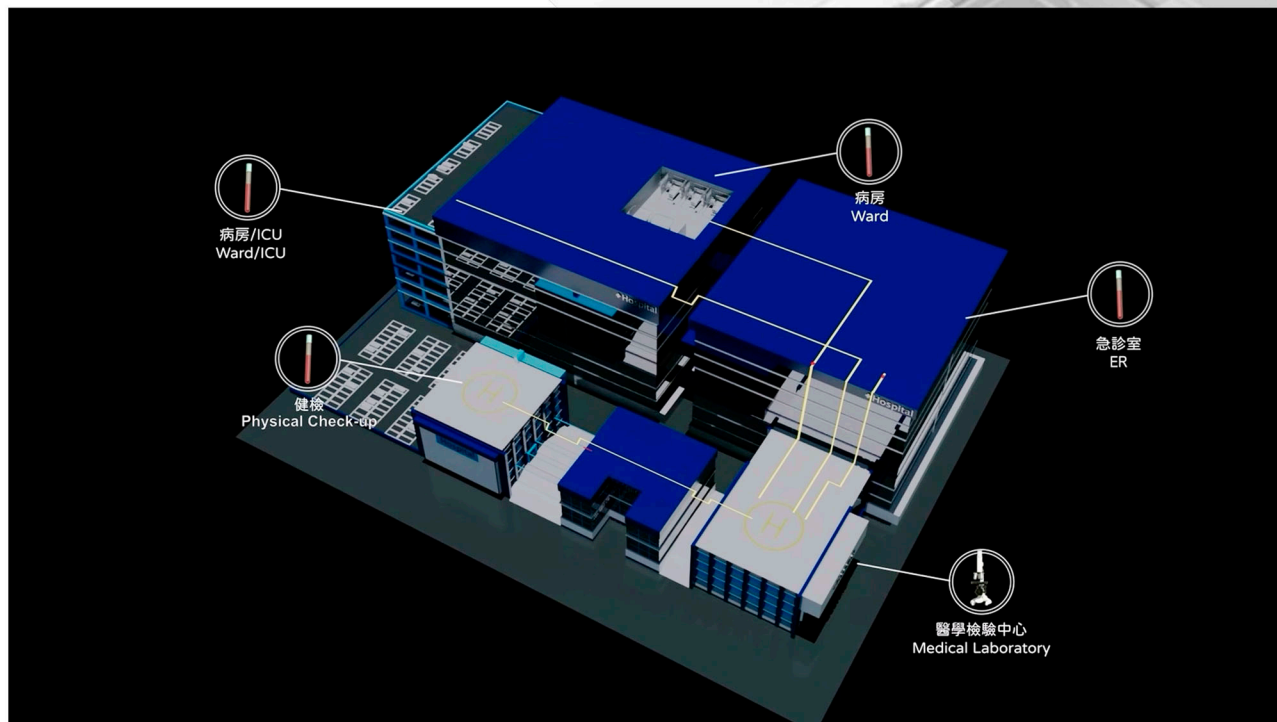
490(W)\*490(D)\*1125(H)mm  
HS code 853710

**Match the specimen loading of  
automated instruments of  
different brands and  
set up receiving boxes for  
different heights**



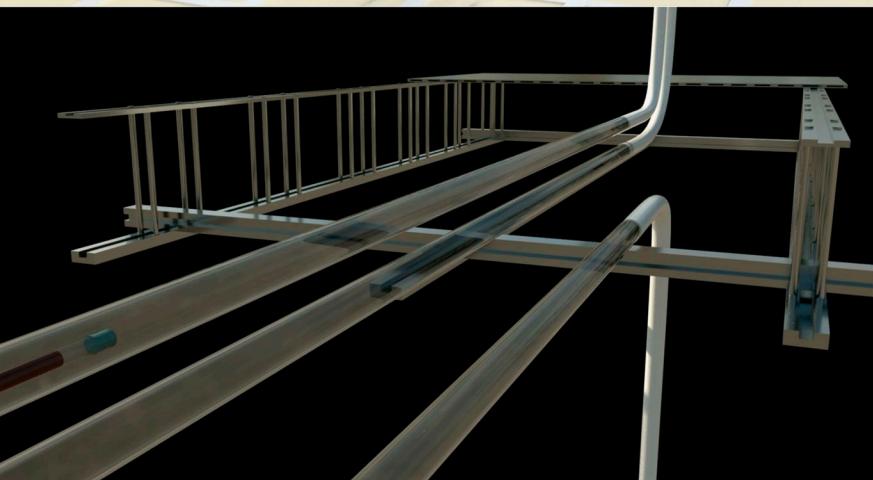
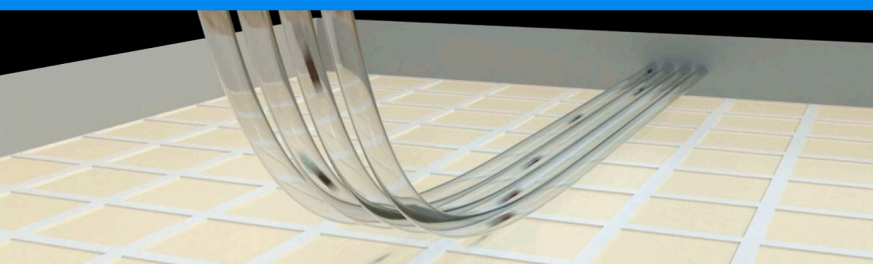
## Transfer of specimens across buildings

AC1000S can set up 3-4 pipelines with one host at the same time, and transport test tubes across buildings to different destinations



The AC 1000S transmission path can be planned according to customer needs, anywhere across buildings or floors.

- AC mini→ASR
- AC mini→AC1000S→ASR
- AC mini→AC1000S
- AC mini→ASR→AC1000S



*AC 1000S transmission pipeline is easy to erect and construct.*



炬邑企業有限公司  
JU YUH ENTERPRISE

新竹縣湖口鄉達生八街578號

電話：03-5996160

<http://www.jye-corp.com.tw>

No.578 Dasheng 8th Street, Hukou Township, Hsinchu County

Tel:+886-3-5996160

<http://www.jye-corp.com.tw>

**Everyone  
Participates**

**Innovative  
Technology**

